

Integration and Integrated Care Fund

14 November 2014



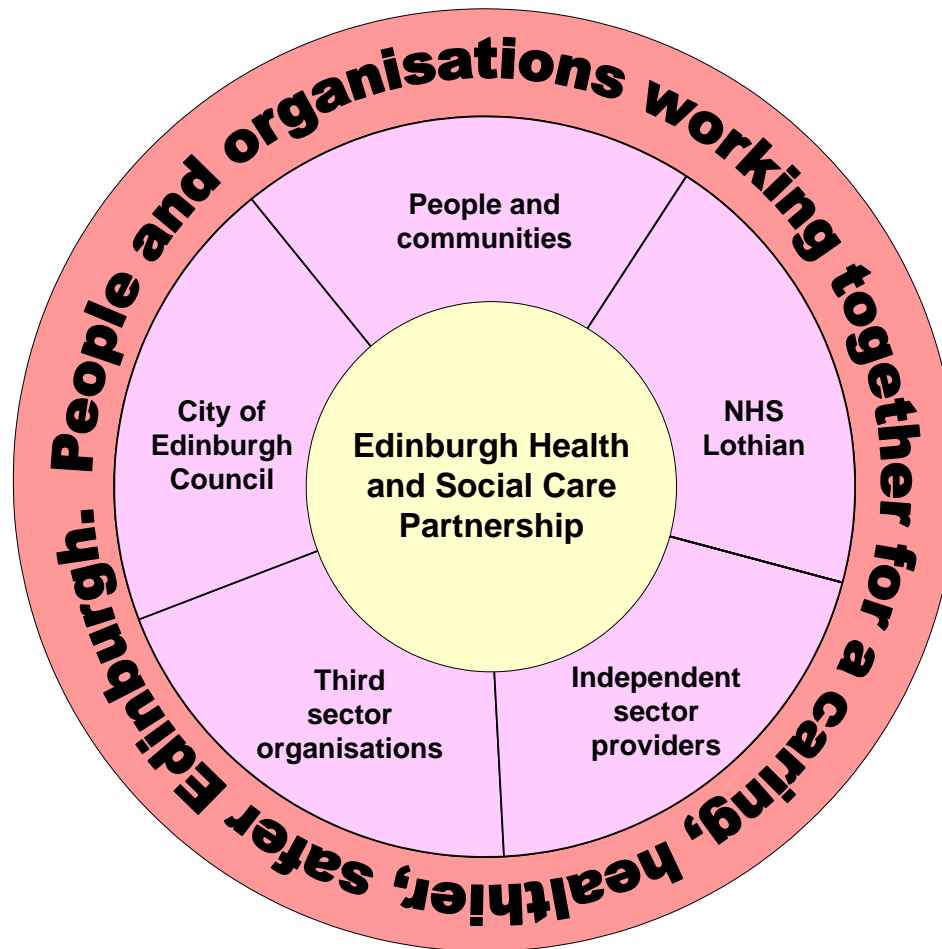
Why integration?

To improve people's health and wellbeing through the provision of joined up and seamless health and social care services

The challenges

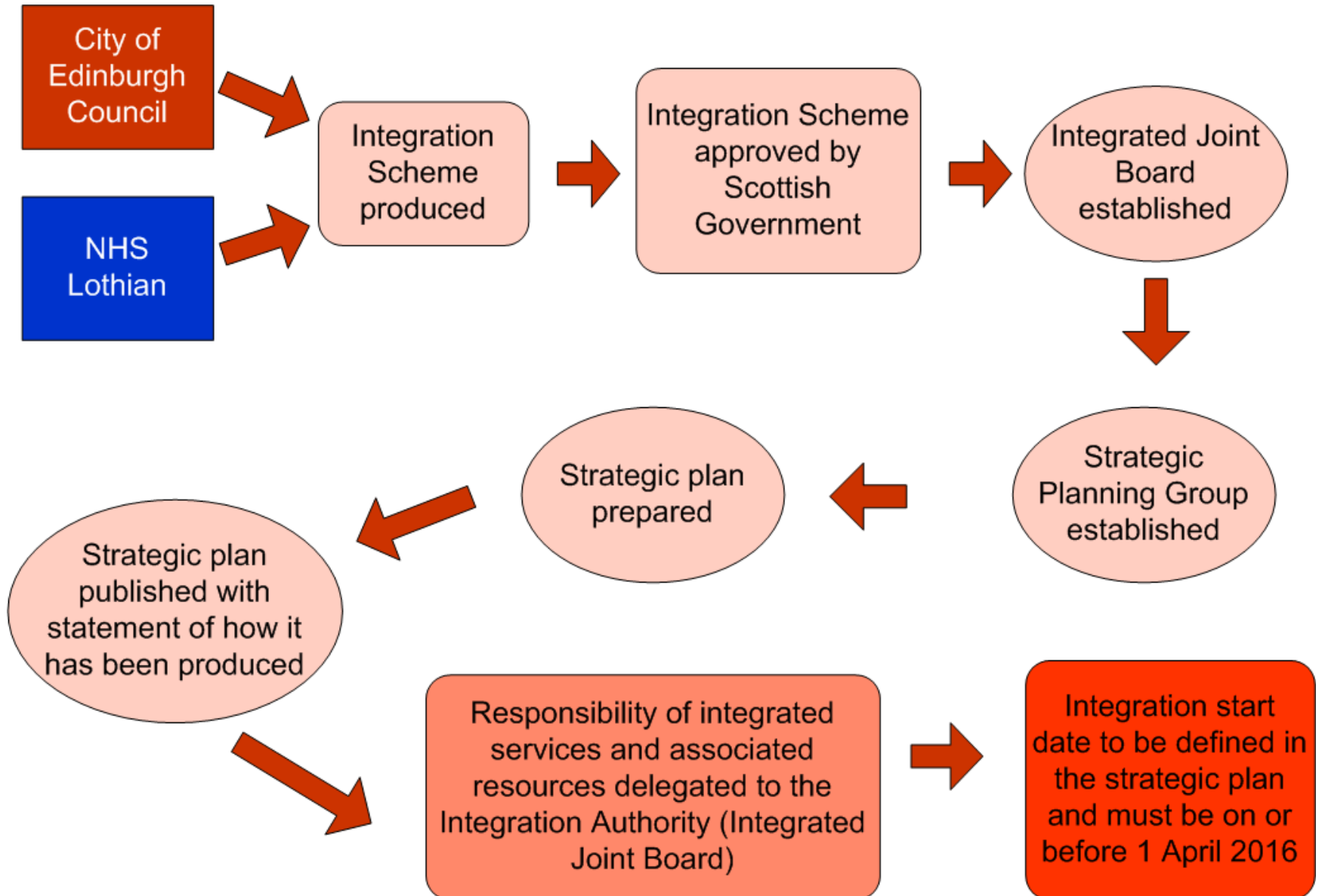
- Demographic
- Financial

Draft local vision



- In Edinburgh, the successful integration of health and social care will mean that people experience improved health and wellbeing; and that inequalities, including health inequalities are reduced.
- Services will always be planned with and around people and local communities who will be active partners in the design, delivery and evaluation of these services.
- We will develop, train and support staff from all organisations to work together to respond appropriately to meet people's needs.
- We will deploy our shared resources in the most cost effective way to achieve better outcomes for people, and to allow public funds to go further to meet demand.

Steps to integration



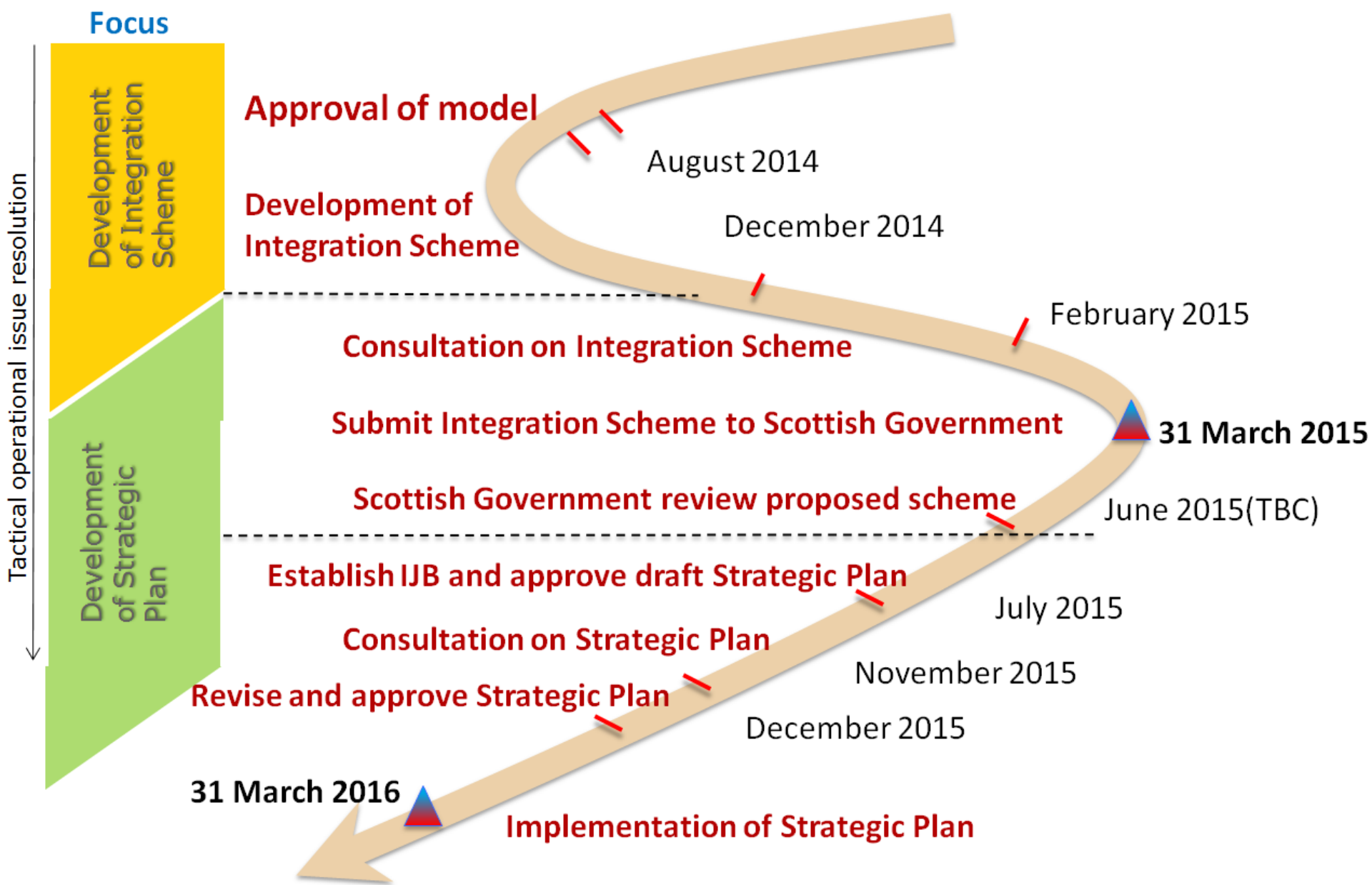
Contents of the scheme and plan

Integration Scheme

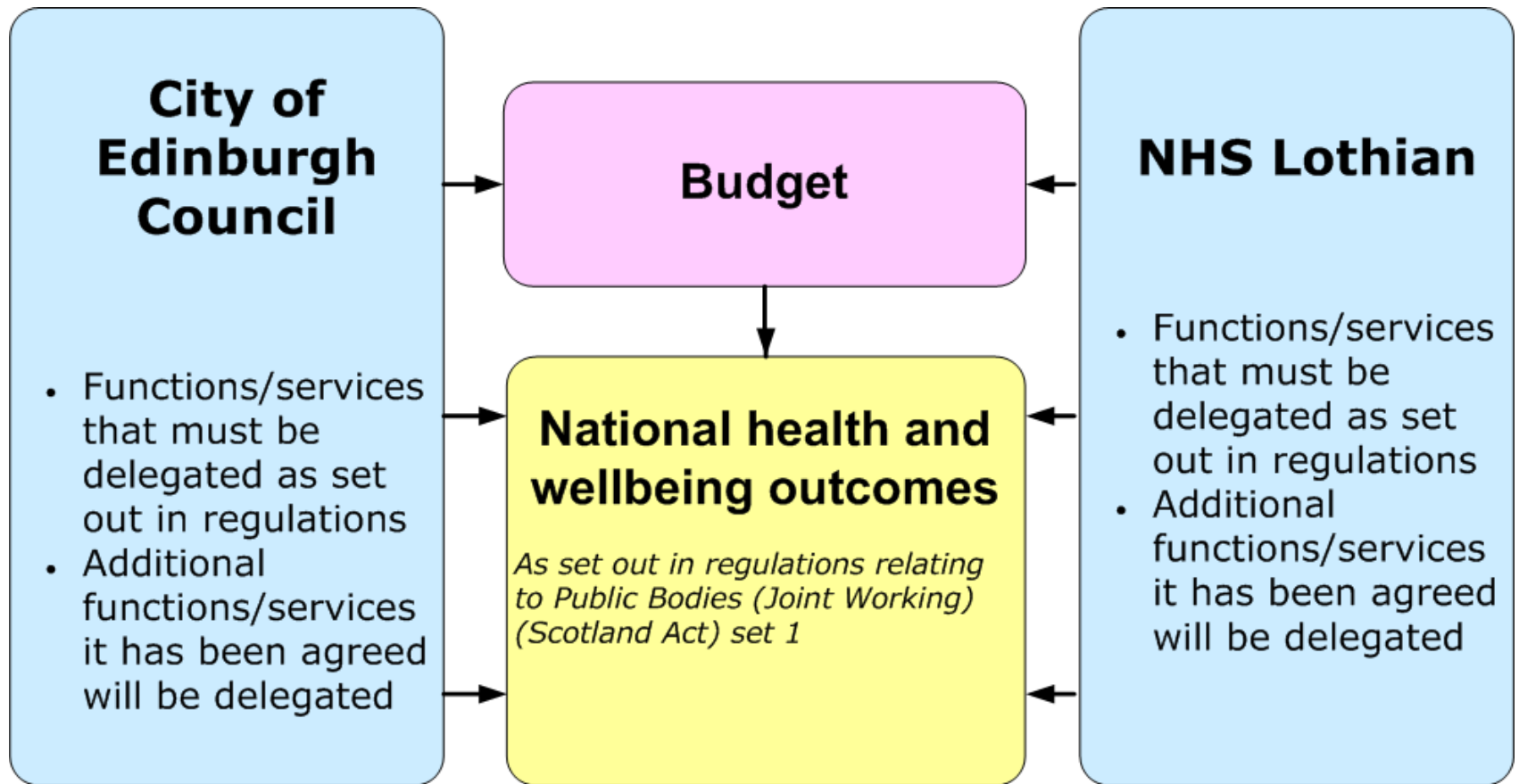
- Governance
- Role of Chief Officer
- Functions (and services) to be delegated (scope)
- Performance targets and arrangements
- Workforce development
- Financial management
- Participation and engagement strategy
- Information sharing arrangements
- Complaint/claims, risk and liabilities
- Dispute resolution

Strategic Plan

- Localities covered by the plan
- Arrangement for delivery of integrated functions and services
- How arrangements will achieve national health and wellbeing outcomes
- Other material the integration authority thinks fit
- Statement of how plan was prepared



Scope of the strategic plan



Requirements for preparation of the strategic plan

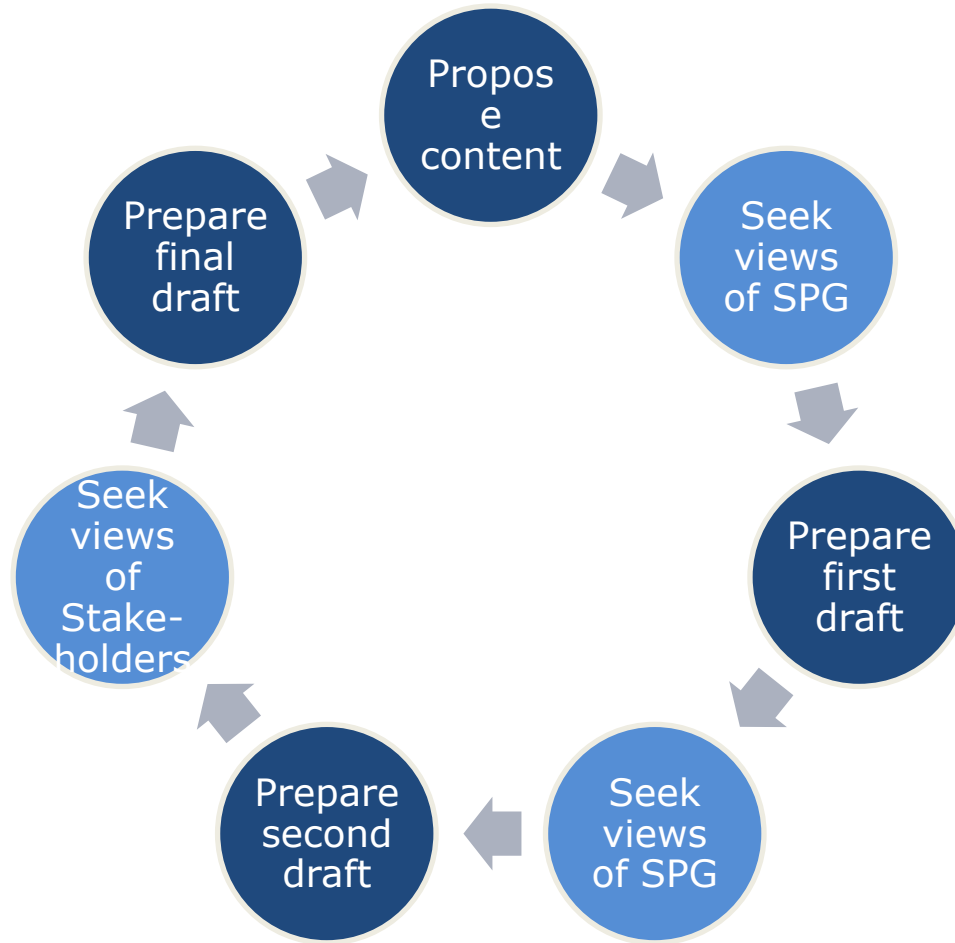
- Must be prepared before the integration start date
- Strategic Planning Group must be established before the plan is prepared
- Must have regard to the integration delivery principles
- Must take account of impact on the strategic plans of neighbouring authorities

Strategic Planning Group (SPG)

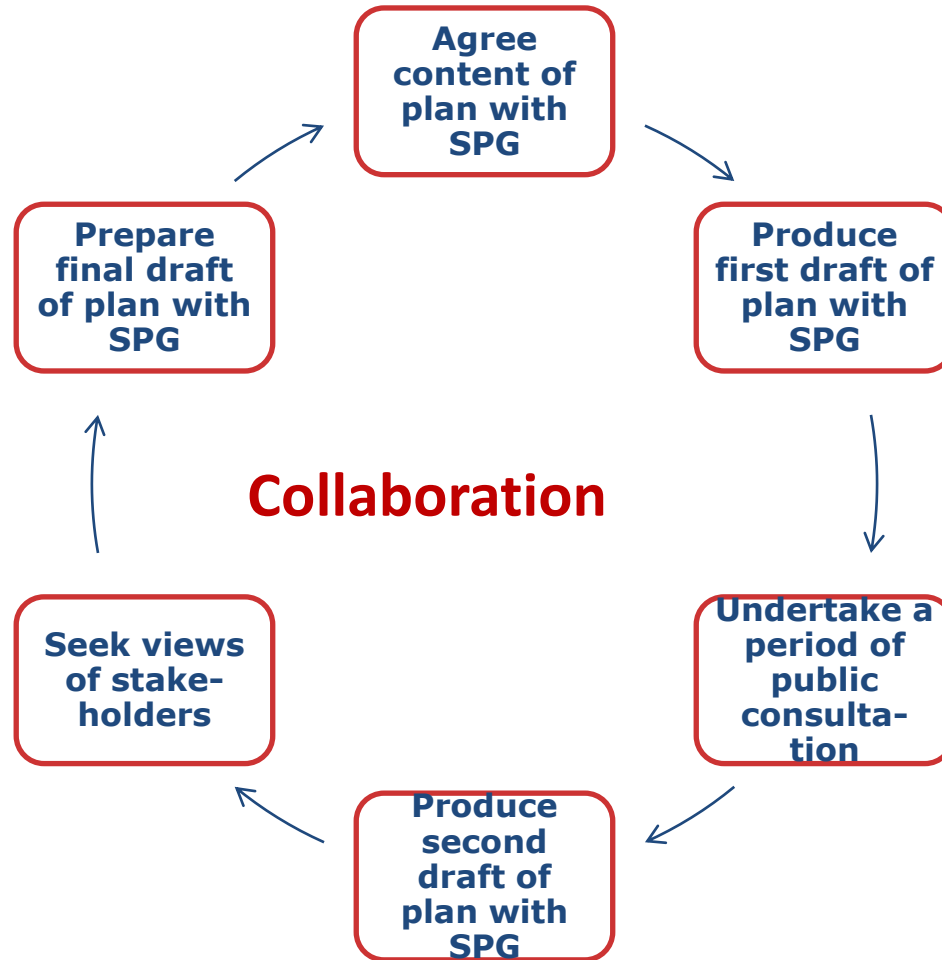
The groups to be represented on the Strategic Planning Group are set out in legislation:

- Local authority
- Health board
- Localities covered by the plan
- Users of social care services
- Users of health services
- Carers of users of social care services
- Carers of users of health services
- Health care professionals
- Social care professionals
- Non-commercial providers of health services
- Non-commercial providers of social care services
- Commercial providers of health services
- Commercial providers of social care services
- Non-commercial providers of social housing
- Third sector organisations involved in health or social care

Requirements for preparation of the plan



Proposed Edinburgh approach to the SPG



Proposed membership of SPG

